

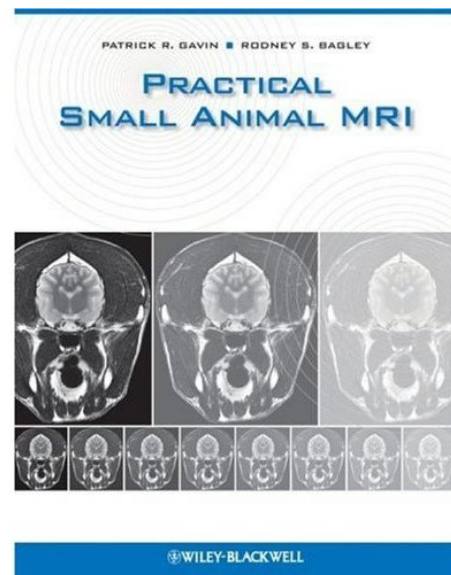


Australasian Association of  
Veterinary Diagnostic Imaging  
[Inc NSW]

# Practical Veterinary MRI

**AAVDI will host Drs. Pat Gavin (USA) in Sydney in June, 2010.**

Pat Gavin is a pioneer of Veterinary MRI, with 30 years experience using MRI as a clinical modality at Washington State University. He is the co-author of the only Veterinary MRI textbook, published in 2009. Pat is an experienced teacher and lecturer. Pat has a very practical approach to interpreting MRI and will share pearls of wisdom and simple tricks that make the process of reviewing the large number of MRI sequences much simpler and more logical. Zoe Lenard and Kathleen Hughes will be supporting Pat to share their practical clinical experience with low field strength magnets. This is a conference to not be missed!



**Location:** The Mercure Hotel, 818-820 George Street, Central Sydney, NSW 2000

**Dates:** 12<sup>th</sup> & 13<sup>th</sup> June 2010 [Queens Birthday Weekend].

To register and for more exciting information regarding this upcoming event contact the meeting secretariat on 1300 670 102 or by emailing your query to [aavdi@online-vets.com](mailto:aavdi@online-vets.com).

***Be in quick! Registrations will be strictly limited to a maximum of 40 people only!***

**Cost:** \$1,150.00 (incl gst). Fees include 2 day seminar attendance, morning and afternoon tea & lunch on both days. (Prices are in Australian dollars)

## Program:

### **Day 1: The neurocranium, splanchnocranium and spine, including interactive case studies**

8.00 - 8.30	Registration	
8.30 - 9.15	Pat Gavin.	Pretest for baseline knowledge Protocol development and sequence selection
9.15 - 10.00	Pat Gavin.	Contrast and artifacts-there can be a relationship
10.00-10.30	<i>Morning Tea</i>	
10.30-11.15	Pat Gavin.	Diseases of the Neurocranium
11.15-12.00	Cathy Hughes.	Low field strength magnets: Optimising image quality
12.00 - 1.00	<i>Lunch</i>	
1.00 - 2.15	Pat Gavin.	The Intervertebral Disc
2.15 - 3.00	Pat Gavin.	The Spine Minus the Disc
3.00 - 3.30	<i>Afternoon Tea</i>	
3.30 - 4.15	Pat Gavin.	Disease of the Splanchnocranium
4.15 - 5.00	Case Studies, interactive session	

### **Day 2: Orthopaedics, the abdomen, thorax, vascular studies, and cancer imaging including interactive case studies**

8.00 - 8.30	Registration	
8.30 - 10.00	Pat Gavin.	Orthopaedics
10.00-10.30	<i>Morning Tea</i>	
10.30-11.15	Pat Gavin.	Vascular Studies
11.15-12.00	Zoe Lenard.	Case studies and experiences using a 0.3T vertical magnet.
12.00-1.00	<i>Lunch</i>	
1.00 - 2.15	Pat Gavin.	Abdominal Imaging with MR
2.15 - 3.00	Pat Gavin.	Thoracic Imaging with MR
3.00 - 3.30	<i>Afternoon Tea</i>	
3.30 - 4.15	Pat Gavin	Post test for acquired knowledge Additional Case Studies
4.15	End of Meeting	

